



PRIVATE CHARTERS

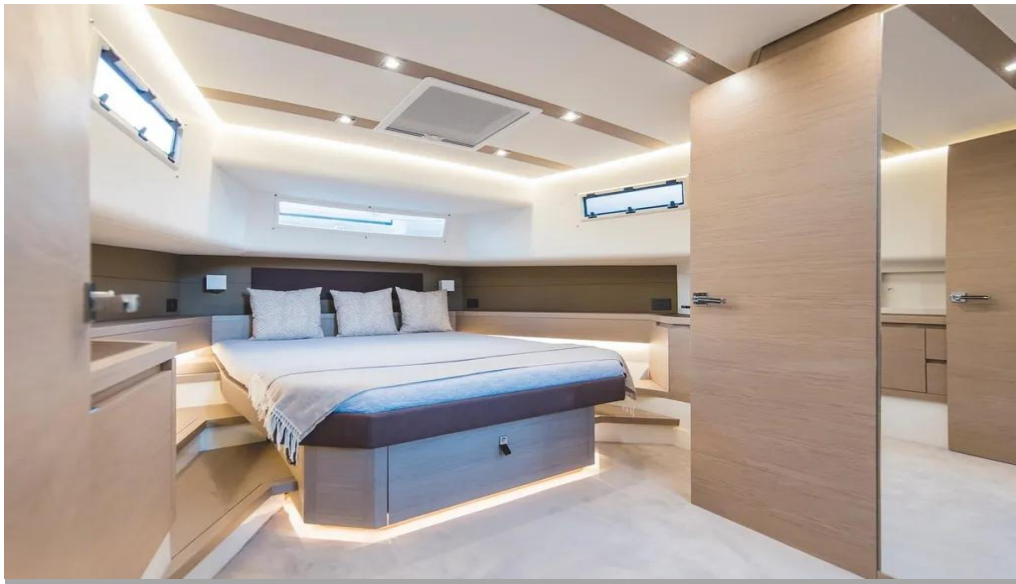
IBIZA - FORMENTERA

[www.yachtsandboatsibiza.com](http://www.yachtsandboatsibiza.com)



SILVER







## FURNISHING

- A/C
- USB
- Flaps
- GPS
- VHF
- Hard top
- Audio system
- Freezer
- Ext. & Int. Dinning table
- Bow & Stern Sun beds
- Electric Bimini
- Swim Platform
- Stabilizers

## ACCOMODATIONS

- 1 Open Cabins (1 double – 1 Twin)
- 2 Bathroom

### INCLUDED

- Beverage
- Snacks
- Towels

### EXTRAS (On request)

- Seabob
- Hostess
- Catering

## TECHNICAL DETAILS

Year/Refit	2021(2025)
Lenth / Eslora:	15,98 mts.
Beam / Manga:	4,81 mts.
Engines:	2 x IPS800 1.200hp
Consumption / Consumo:	220 l/hs.
Capacity / Capacidad:	12 + 2 crew
Overnight/Pernocta:	4 + 1
Cruising Speed / Vel. Crucero:	22 knts
Max Speed / Vel. Max:	33 knts

### MONTH

### DAY

### WEEK

May	€2.645.-	*On Request
June	€3.306.-	*On Request
July	€3.802.-	*On Request
August	€3.802.-	*On Request
September	€3.306.-	*On Request
October	€2.645.-	*On Request

\* Included: Skipper & Crew, Insurance, mooring at base port Marina Ibiza

\* Not included: VAT (21%), APA (30%), fuel, out of mooring, Overnight

\* Reserves: 50% in Advance.