



PRIVATE CHARTERS
IBIZA - FORMENTERA

www.yachtsandboatsibiza.com

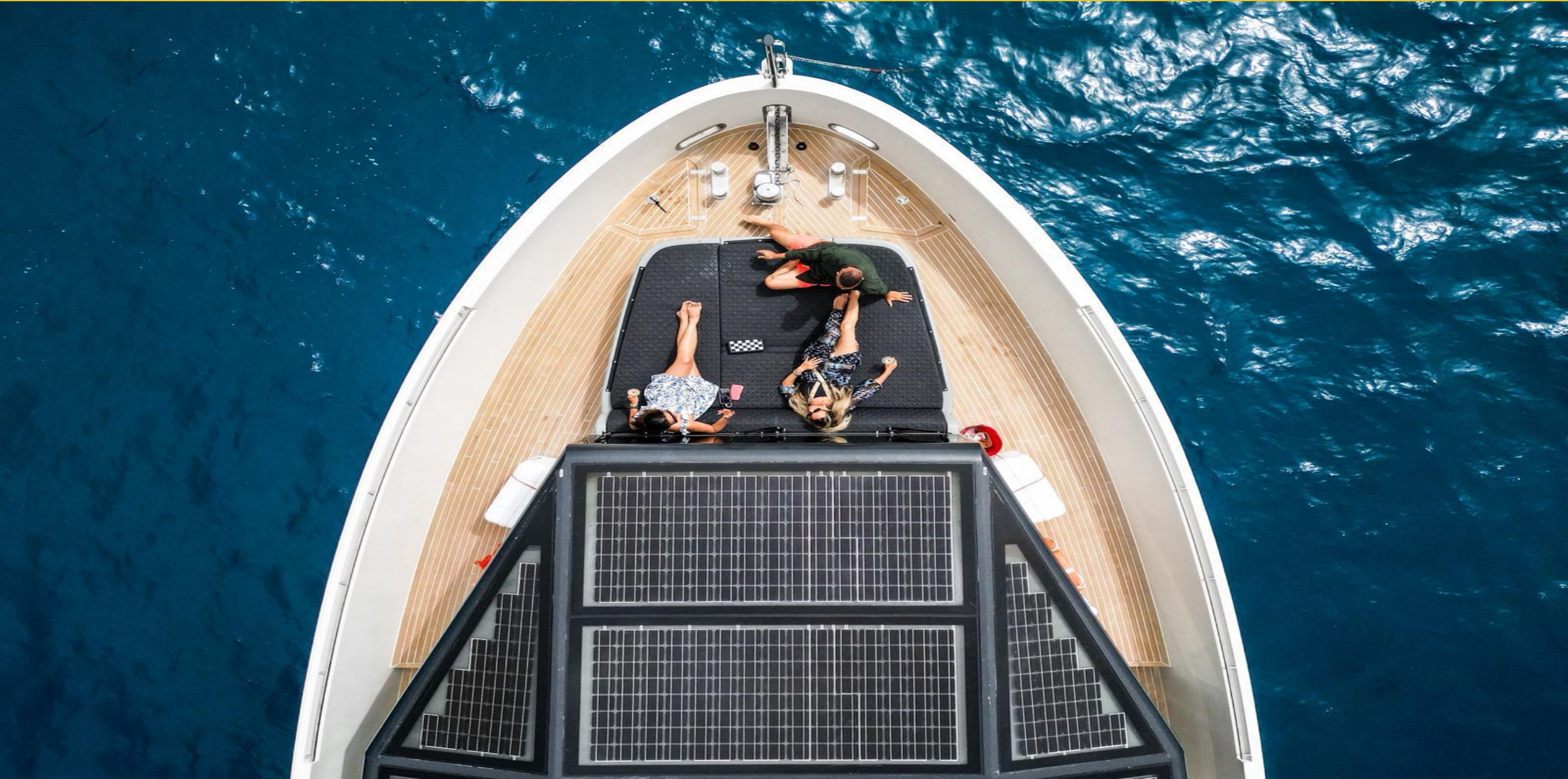


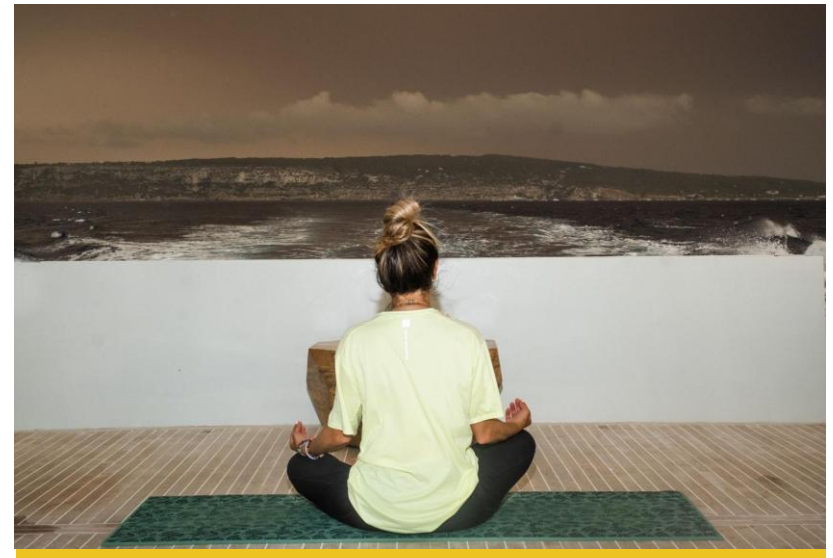
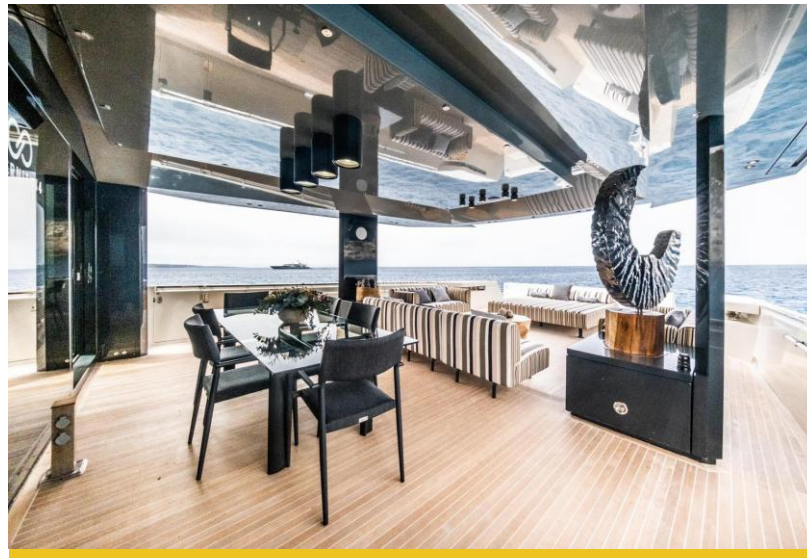
GOLD

















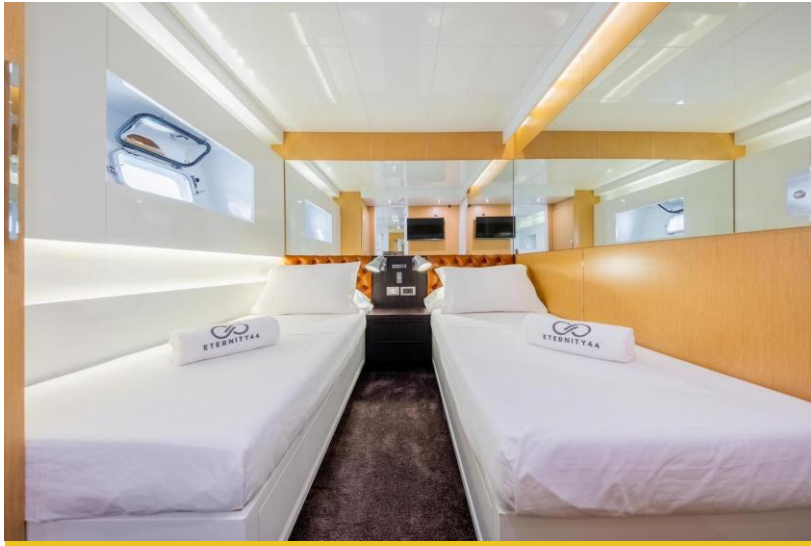


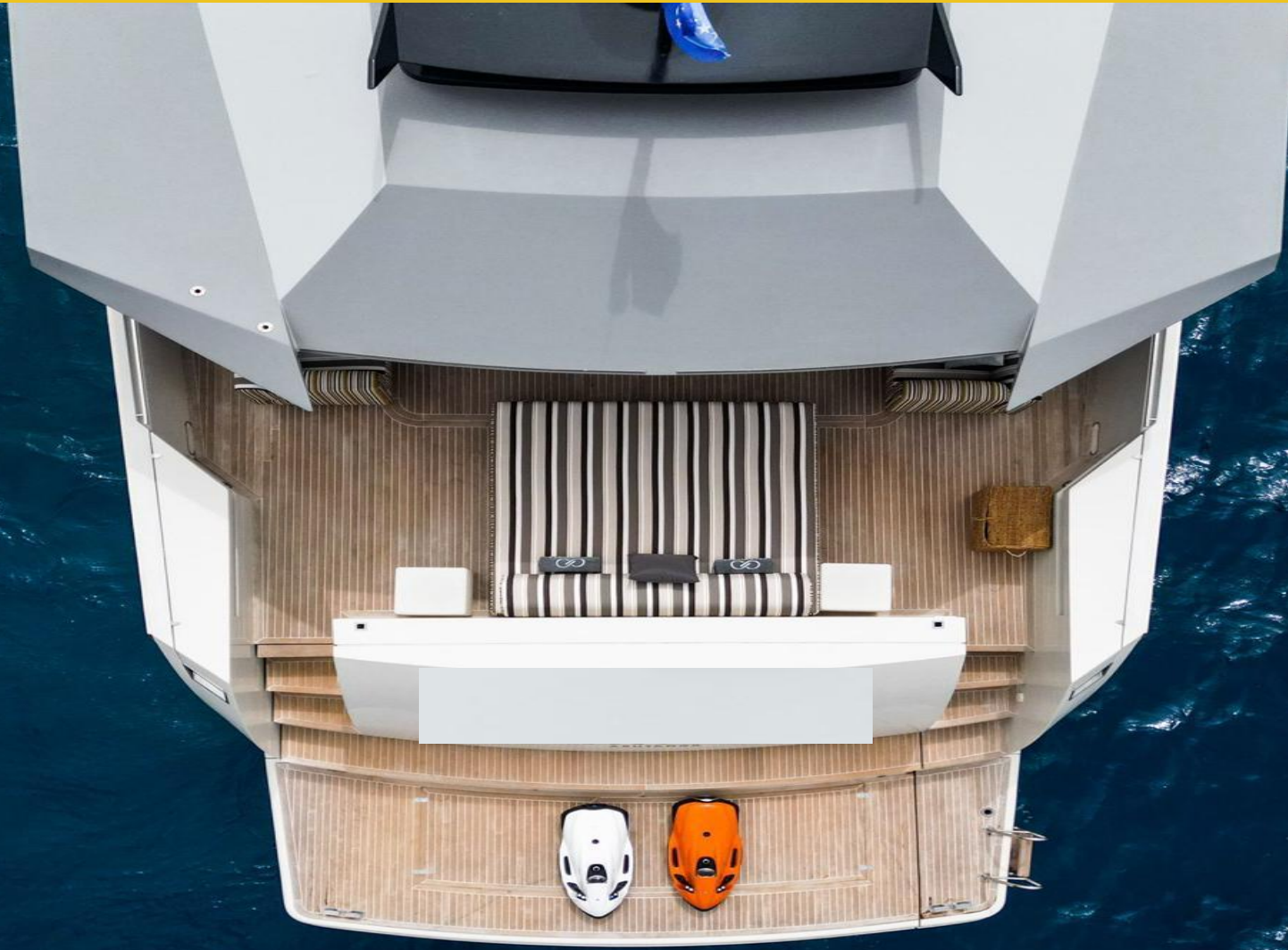














FURNISHING

- A/C
- TV / DVD / USB
- Flaps
- GPS
- VHF
- Hard top
- Entertainment system
- Wifi
- Coffee Table
- Freezer
- Hot water
- Exterior dinning table
- Front sun beds
- Stabilizers at Anchor

ACCOMODATIONS

- 4 Cabins (1 Master -1 Vip - 2 Twins w/pull)
- 4 Bathrooms

INCLUDED

- Towels
- Beverage
- Snacks

EXTRAS

- Tender 380 Williams
- 2X Seabobs
- Paddle Surf
- Inflatable
- Snorkels

TECHNICAL DETAILS

Year/Refit:	2010/2024
Length / Eslora:	25,50 mts.
Beam / Manga:	7,15 mts.
Engine / Motor:	2 x MAN D28 76 LE 730 hp
Consumption / Consumo:	250 l/hs.
Places / Capacidad:	12 + 3 Crew
Night / Pernocta:	8 + 3 Crew
Cruising speed / Vel. Crucero:	13 knts.

MONTH	DAY	WEEK
May	€8.500.-	€51.000.-
June	€8.500.-	€51.000.-
July	€9.500.-	€60.000.-
August	€9.500.-	€60.000.-
September	€8.500.-	€51.000.-
October	€8.500.-	€51.000.-

* Included: Skipper & Crew, insurance, Berth in Marina Botafoch.

* Not included: VAT (21%), APA (35%), Fuel, out of mooring.

* Reserves: 50% - 50% check in.